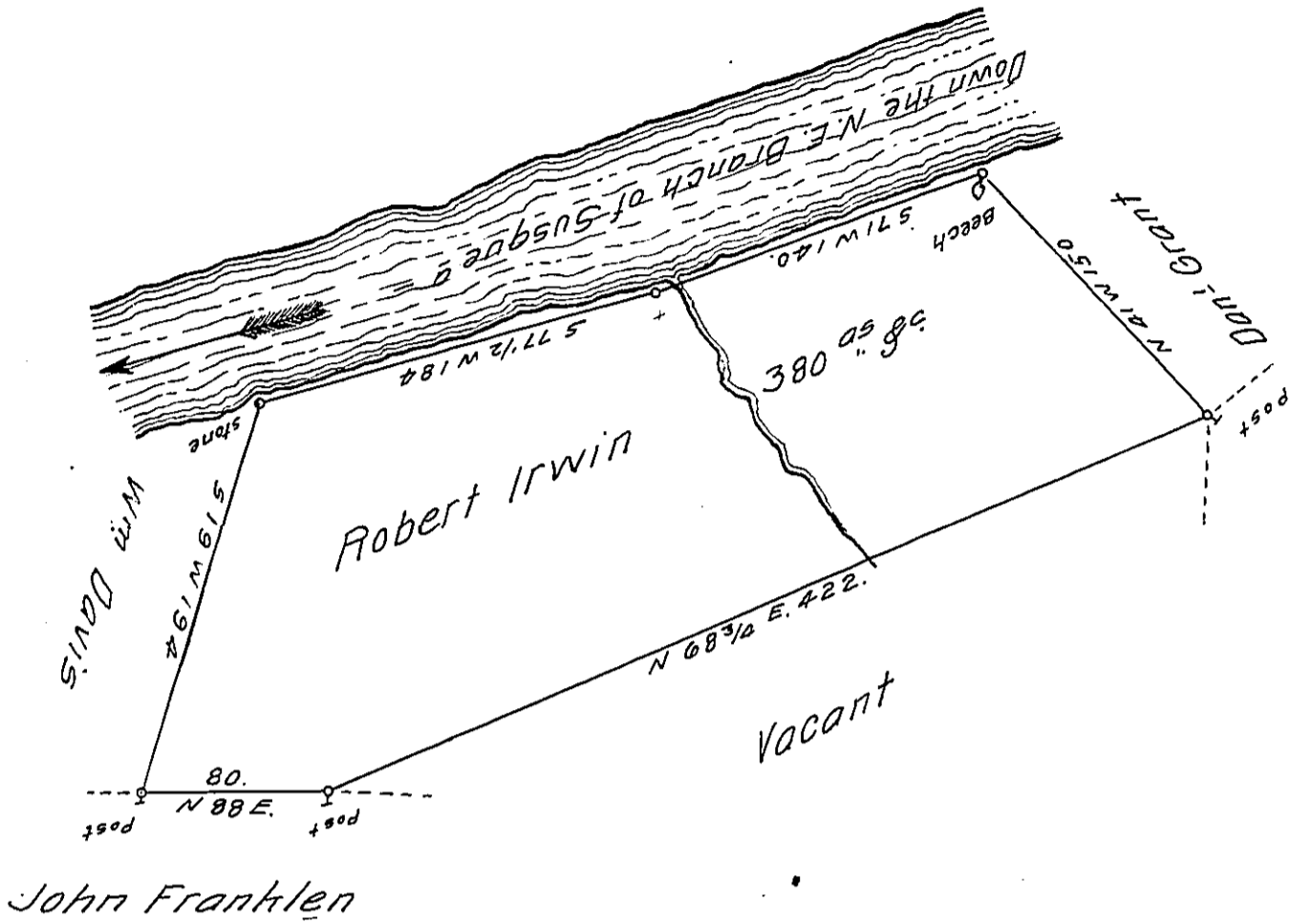


X



A Draft of a tract of land called fellowship Situate on the South Side of the N.E. Branch of the River Susquehanna about a mile below the mouth of the Wappawolopen Creek in the County of Luzerne. Containing three Hundred & Eighty Acres & Allowance. Surveyed for Robert Irwin the 9<sup>th</sup> day of July 1794. by virtue of a Warrant dated the 21<sup>st</sup> day of Febr. 1793.

by  
 Daniel Brodhead Esq<sup>r</sup> }  
 Surv<sup>r</sup>. Gen. } Wm Gray D. S.

IN TESTIMONY that the above is a copy of the original remaining on file in the Department of Internal Affairs of Pennsylvania, made conformably to an Act of Assembly approved the 16th day of February, 1833, I have hereunto set my Hand and caused the Seal of said Department to be affixed at Harrisburg, this third day of November 1911.

*Henry Howell*  
 Secretary of Internal Affairs.